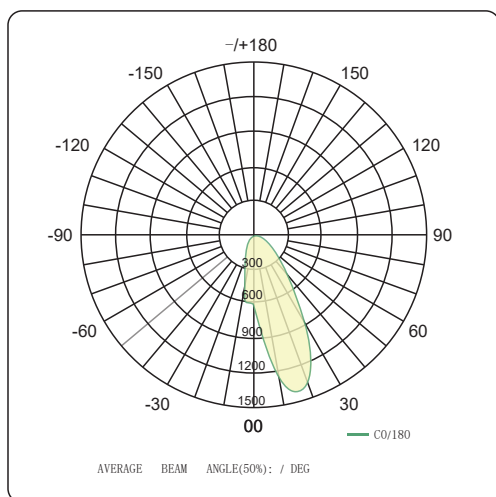
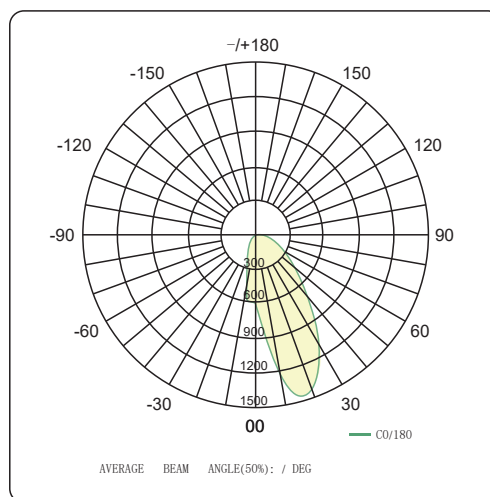


Photometry

Beam angle: /
Delivered Lumens: 915 lumens
CCT: 4000K
CRI: 97
Power: 15W
Efficacy: 61lm/W

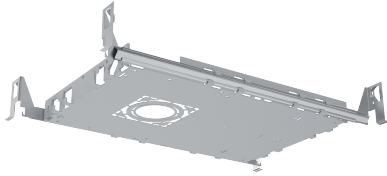


Beam angle: /
Delivered Lumens: 1320 lumens
CCT: 4000K
CRI: 90
Power: 15W
Efficacy: 88lm/W



ACCESSORIES

Brackets for New-Construction (4-legs)

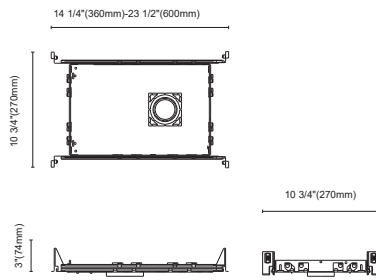


NCP-SR3-R21

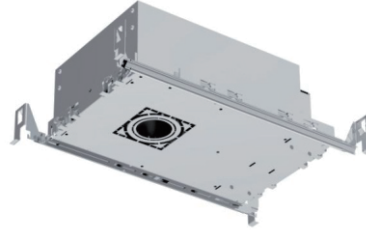
Cut out:

- Round: Ø 3" (Ø 77mm)
- Ø 2" (Ø 62mm)
- Ø 1" (Ø 50mm)

Square: □ 3" (□ 77mm)



IC-BOX for New-Construction (4-legs)

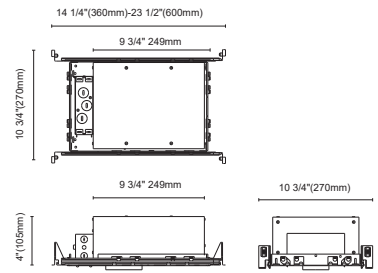


NCBX-SR3-R21

Cut out:

- Round: Ø 3" (Ø 77mm)
- Ø 2" (Ø 62mm)
- Ø 1" (Ø 50mm)

Square: □ 3" (□ 77mm)



Cut out



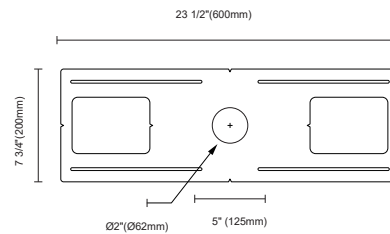
Brackets for New-Construction



BRKT-R60A

Cut out:

- Round: Ø 2" (Ø 62mm*2)



Remark

Tailored brackets are available with a reasonable surcharge, details as below

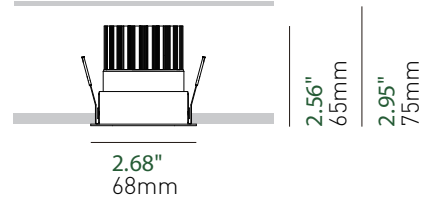
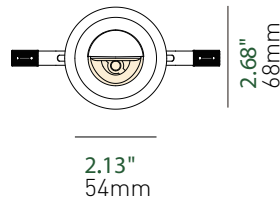
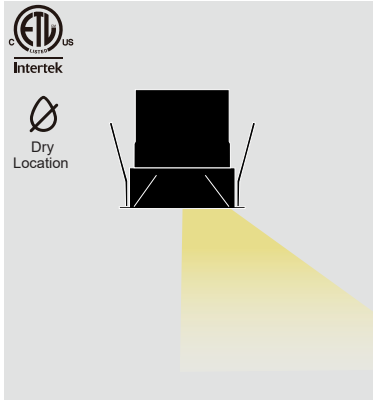
- The customized bracket's dimensions are still the same as the existing ones, 600*200mm
- Hole sizes can be customized within the range of 25-100mm
- Holes quantity can be indicated, 1-7pcs
- Holes' positions on the bracket can be done as requests

For more information, please get in touch with sales.

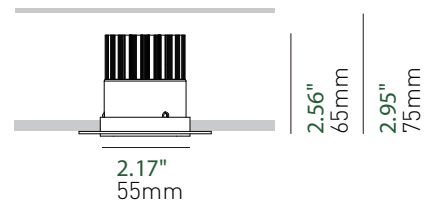
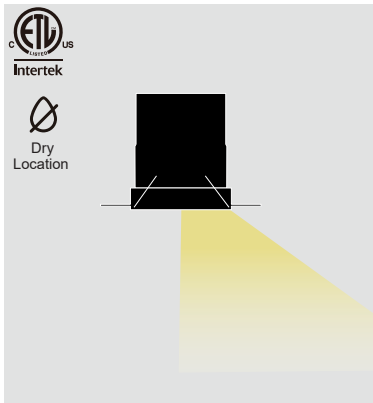
2" Wall Washer

N55-R27

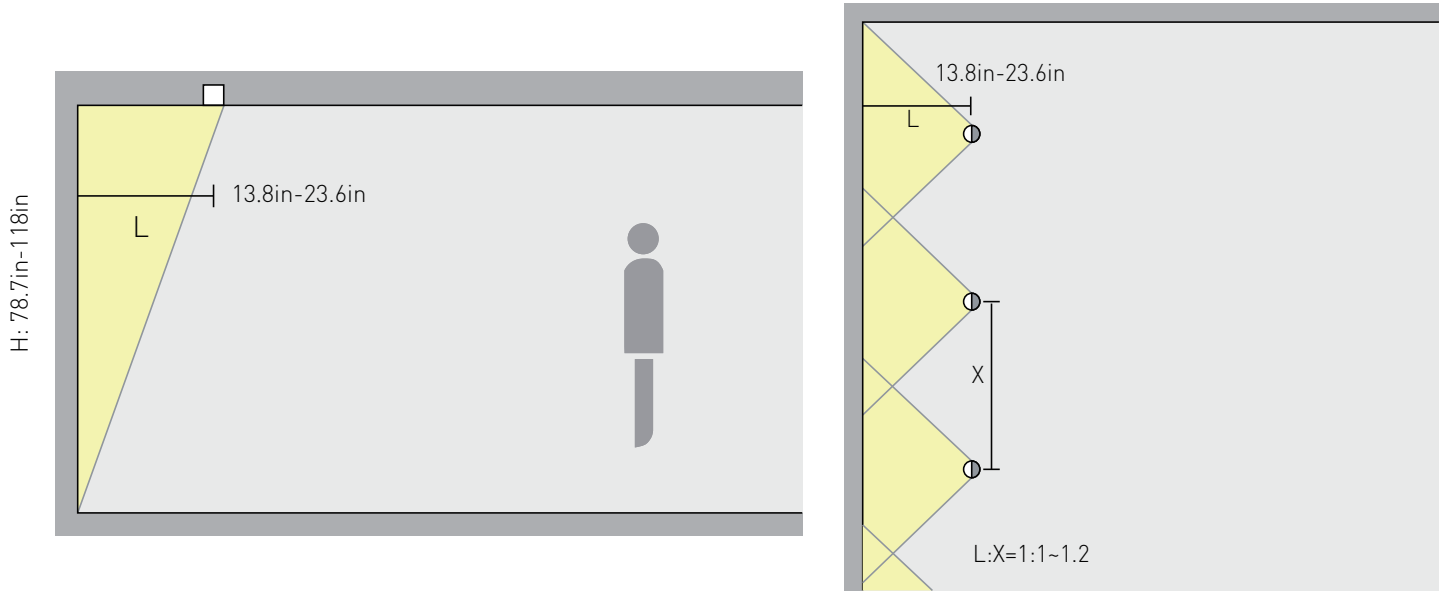
N55-R27



N55-R27



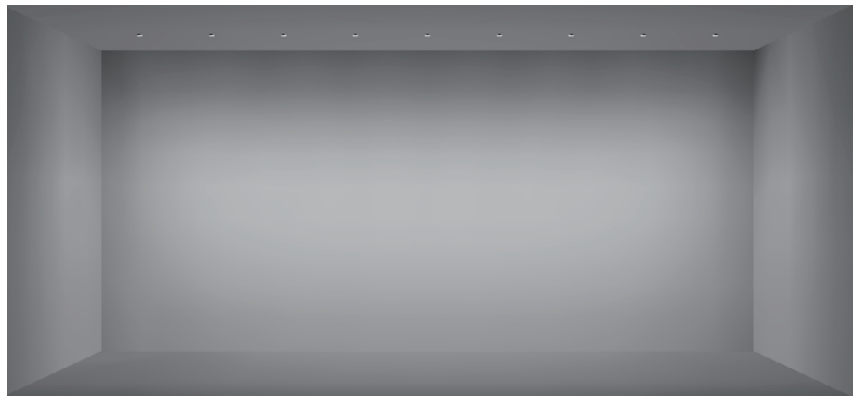
2" Wall Washer



Lighting effects

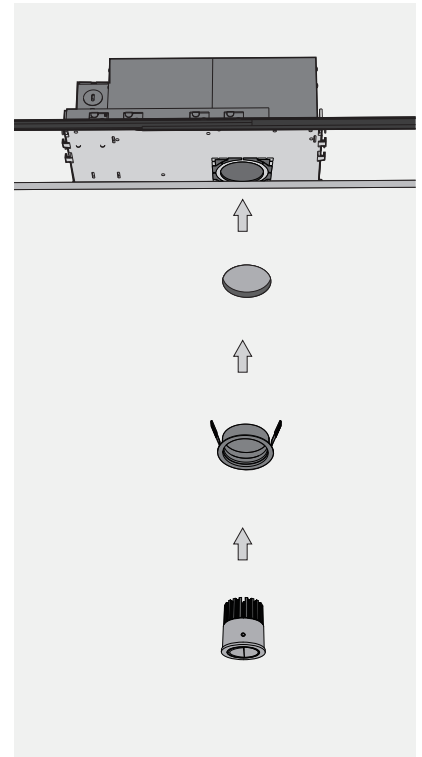
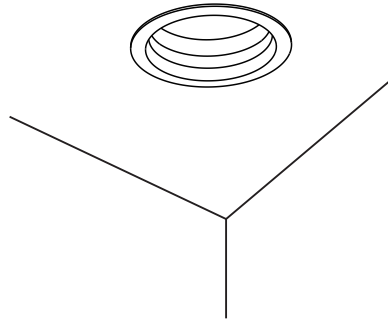
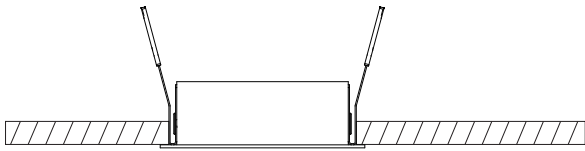


• 1 FIXTURES / 35FT WALL SHOWN



• 9 FIXTURES / 35FT WALL SHOWN

Microflange



Trimless Drywall

