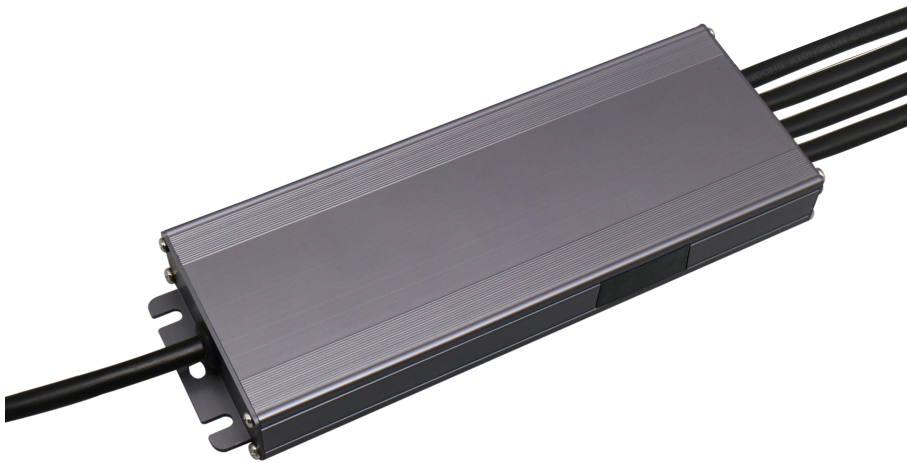


## KI-XG-DP2WA Series 100W

Whole Family: KI-1001A5-XG-DP2WA (XG=1/2/3/4G) [ 40W 60W 100W 200W ]



### Features

Output Type:	Constant Current
Input Range:	120-277VAC
Efficiency:	Up to 91%
Protections:	Short circuit / Over load / Over temperature
Heat dissipation:	Cooling by free air convection
Waterproof performance:	IP66 can be used indoor and outdoor. (EU) Full aluminum protection housing, for dry, damp & wet locations. (US)
Design features:	<ol style="list-style-type: none"><li>1. The real-time current of each channel can be read through NFC.</li><li>2. The address can be set from 0 to 63 via NFC.</li><li>3. The lamp in Open circuit or short circuit state can be identified in real time by the DALI system.</li><li>4. If the DALI signal line is not connected, only the 4th channel of the 4 channels will be output normally, and the remaining 3 channels will be turned off. If the DALI signal line is connected, each channel will be output normally.</li><li>5. When modifying data via NFC, there is no need to turn off and restart the power.</li></ol>
Dimming function:	DALI-2 dimming
Dimming range:	0.1%-100%
Min load:	Min load is 10%
Application:	Suitable for LED lighting and moving sign applications
Warranty:	5 years warranty

**DALI-2 DT8 Dimming Driver - Constant current output - KI-XG-DP2WA Series 100W**

**Specification**

<b>Model</b>		<b>KI-1001A5-XG-DP2WA</b>		
<b>Certificate</b>				
<b>Output</b>	Voltage range	12-70V	12-67V	
	Current range	150mA-1430mA	1430mA-1500mA	
	Rated power	100W (Max)		
	Current Ripple	<2.0%		
	Overshoot Current	<2.0%		
	Current Tolerance	±2.5%		
	No Load Voltage	71V~76V		
	Load Regulation	<0.1%		
	Line Regulation	<0.1%		
<b>Input</b>	Voltage Range	120-277VAC		
	Frequency Range	50 / 60Hz		
	Power Factor@ full load	>0.99@120VAC	>0.97@230VAC	>0.94@277VAC
	THD(Typ.) @ full load	≤2.5%@120VAC	≤4.0%@230VAC	≤7.0%@277VAC
	Efficiency @ full load	>89.0%@120VAC	>90.5%@230VAC	>90.0%@277VAC
	AC Current (Max.)	1.28A		
	Inrush Current (Typ.)	7.4A, 46us @50%Ipeak 120VAC	14.6A, 42.8us @50%Ipeak 230VAC	18.0A, 32us @50%Ipeak 277VAC
	Leakage current	<0.5mA		
<b>Protection</b>	Short Circuit	Hiccup mode, recovers automatically after fault condition is removed.		
	Over Load	105%~110% The output current is reduced to 25 percent of the rated output current, recovers automatically after rebooting the power.		
	Over temperature	Ambient temperature over 50°C±5°C, output reduce to 50%; Ambient temperature over 60°C±5°C, output off; When the temperature drops to 45°C ± 5°C, the output recovers to 100%.		
<b>Environment</b>	Working TEMP.	-40~+50°C (see below derating curve)		
	Working Humidity	20 - 95%RH non-condensing		
	Storage TEM.,Humidity	-40 - +80°C,10 - 95% RH non-condensing		
	TEMP.coefficient	±0.03%/°C(0 - 50°C)		
	Vibration	10 ~ 500Hz, 5G 12 minutes/cycle, X Y Z axis 72 minutes each		
<b>Safety &amp; EMC</b>	Safety standards	EN61347-1; EN61347-2-13 UL8750; CAN/CSA-C22.2 No.250.13		
	Withstand voltage	I/P-O/P:3.75KVAC	I/P-FG:1.88KVAC	O/P-FG:0.5KVAC (EU) I/P-O/P:1.88KVAC I/P-FG:1.88KVAC O/P-FG:0.5KVAC (US)
	Isolation resistance	I/P-O/P:100MΩ / 500VDC / 25°C / 70% RH		
	Surge Immunity Test	AC Power Line:Differential Mode 4KV, Common Mode 6 kV		
	EMC Immunity	EN61547; EN61000-4-2,3,4,5,6,11 FCC/ICES do not request this test.		

**DALI-2 DT8 Dimming Driver - Constant current output - KI-XG-DP2WA Series 100W**

	EMC Emission	EN55015; EN61000-3-2,3 FCC Part 15 Subpart B;
<b>Others</b>	Net Weight	0.42KG
	Dimension	217.5*78.1*25.3mm (L*W*H)
	Packing	313*255*290mm 10pcs/CTN
<b>Notes</b>	<ol style="list-style-type: none"> <li>All parameters NOT specially mentioned are measured at rated load, maximum output current(1500mA) and 25°C of ambient temperature.</li> <li>Tolerance: includes set up tolerance and load regulation.</li> <li>Except for the efficiency test, which is tested with the load instrument, the rest data are tested with lamps.</li> </ol>	

**MCB recommendation**

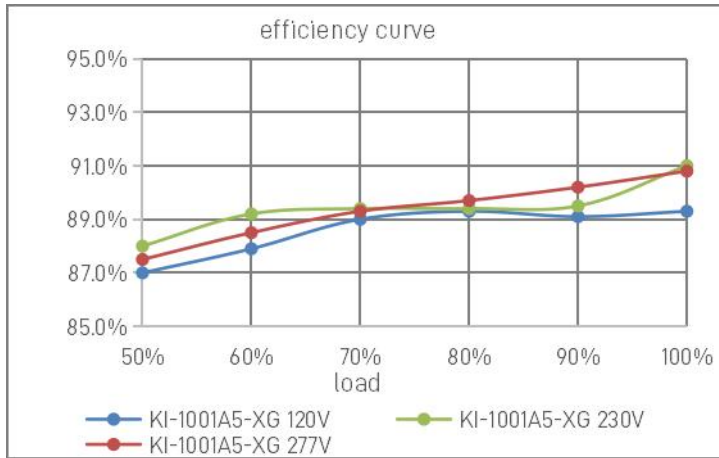
When the input voltage is 120Vac, the number of LED Driver matched by circuit breakers is as follows:		
MCB Type	Level	The number of LED Driver
C type	10A	6
	13A	8
	16A	10
	20A	13
	25A	16
When the input voltage is 230Vac, the number of LED Driver matched by circuit breakers is as follows:		
MCB Type	Level	The number of LED Driver
C type	10A	12
	13A	15
	16A	19
	20A	24
	25A	30
When the input voltage is 277Vac, the number of LED Driver matched by circuit breakers is as follows:		
MCB Type	Level	The number of LED Driver
C type	10A	14
	13A	18
	16A	22
	20A	28
	25A	35

**Note:**

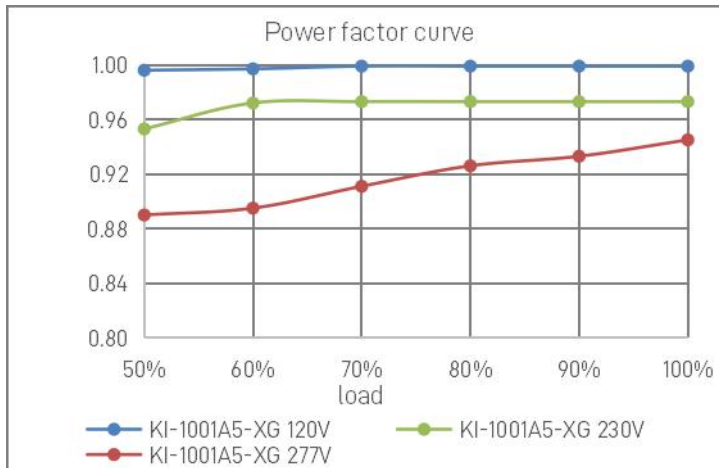
- The above quantities of the led drivers connected on the Type C is recommended base on the maximum ambient temperature is 50 °C.
- The breaker should be selected according to the input rated voltage, input rated current, ambient temperature, and trip characteristic curve.

**DALI-2 DT8 Dimming Driver - Constant current output - KI-XG-DP2WA Series 100W**

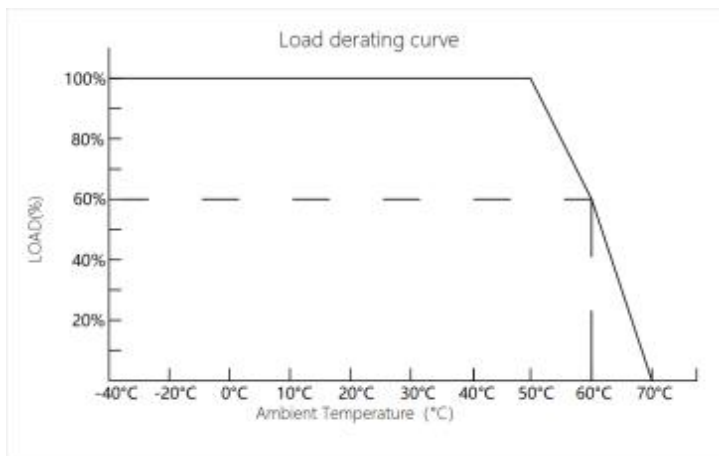
**Efficiency Curve (efficiency vs output load)**



**Power Factor Curve (power factor vs output load)**



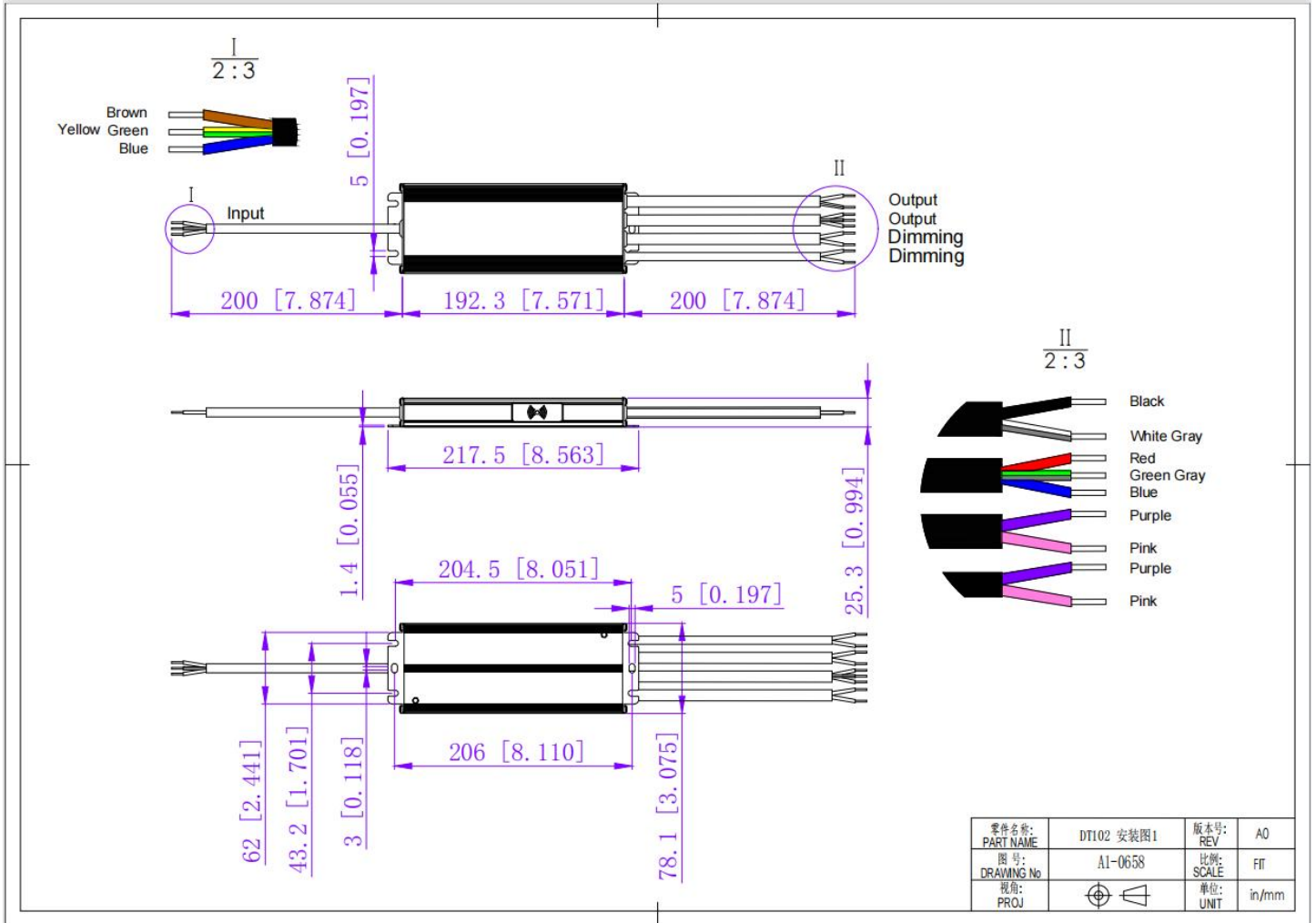
**Derating Curve (Output Current VS Ambient TEMP)**



1. To extend their life, please refer to the Derating Curve and derate according to the temperature.
2. The output current of the LED driver should be selected according to the rated current of the lamp and the ambient temperature. Normally, we recommend the power supply to reserve a certain amount of load to extend LED driver's life .

**DALI-2 DT8 Dimming Driver - Constant current output - KI-XG-DP2WA Series 100W**

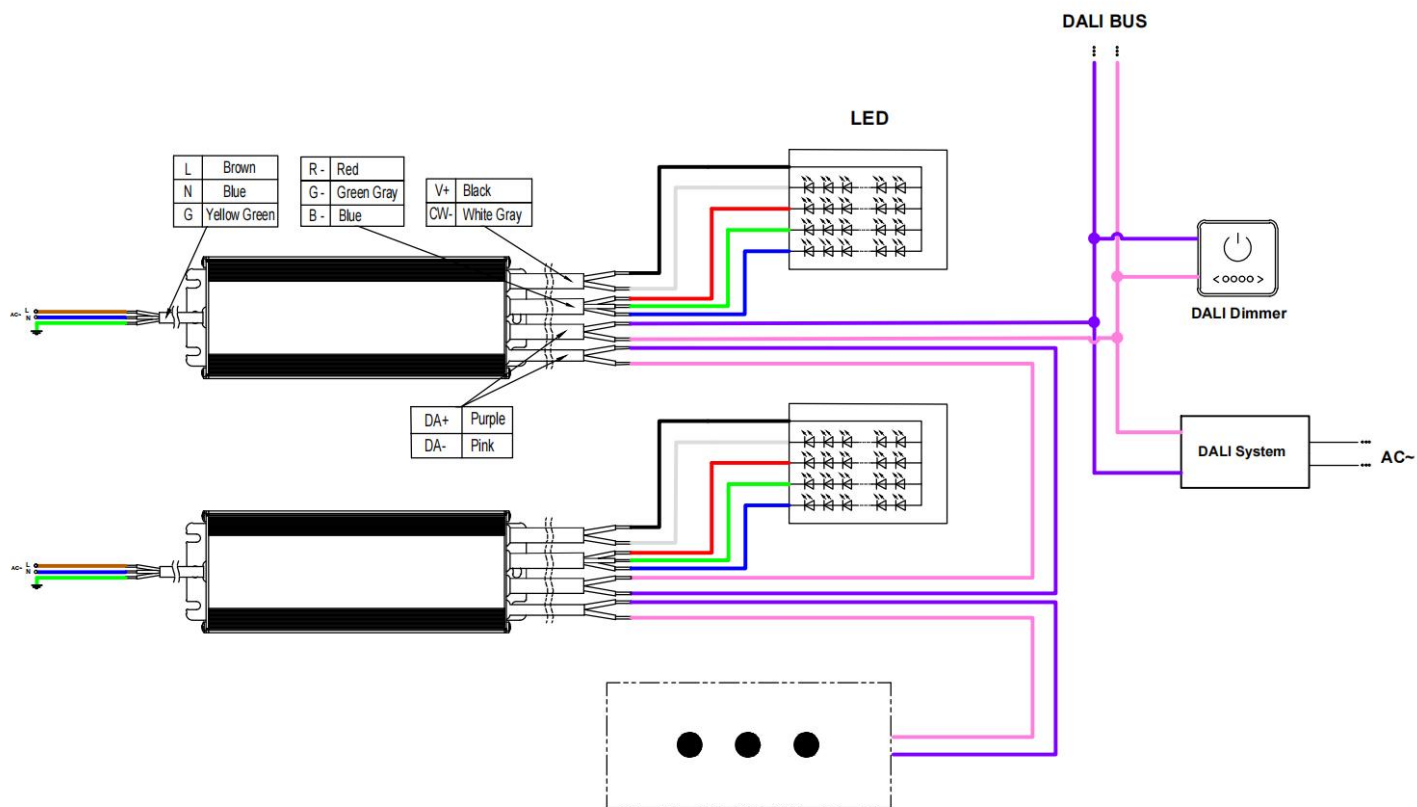
**Mechanical Specification**



**4G Version**

DT102	
Input wire	Brown(L) Blue(N) Yellow Green(G) (3*1.04mm <sup>2</sup> )
Output wire (1G)	Red(V+) Black(V-) (2*0.824mm <sup>2</sup> )
Output wire (2G)	Black(V+) White gray(CW-) Yellow(WW-) (3*0.824mm <sup>2</sup> )
Output wire (3G)	Black(V+) Red(R-) Green gray(G-) Blue(B-) (4*0.824mm <sup>2</sup> )
Output wire (4G)	Black(V+) White gray(CW-) (2*0.824mm <sup>2</sup> ) Red(R-) Green gray(G-) Blue(B-) (3*0.824mm <sup>2</sup> )
Dimming wire	Purple(DA+) Pink(DA-) (2*0.824mm <sup>2</sup> )*2
Remark: Please make sure you connect these correctly otherwise your product will not function correctly and could be damaged.	

## Connection Diagram



### Warm tip:

Please connect the lamp first and then connect the AC line, otherwise the lamp will be damaged !

**DALI-2 DT8 Dimming Driver - Constant current output - KI-XG-DP2WA Series 100W**

**NFC function**

For detailed operation, please refer to ProNFC app manual that request from the sales staff of Shengchang / SCPOWER / SURETRON.

1. Scan below QR code to download the ProNFC APP

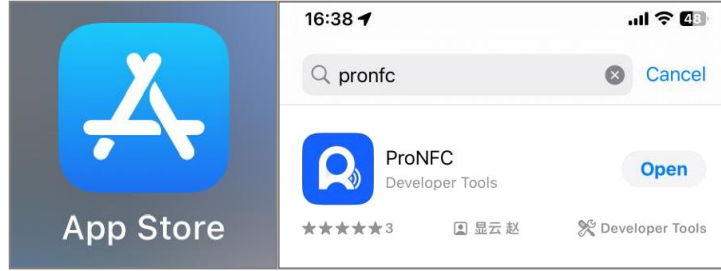
Download Methods for ios device:

ios users can download through the QRcode link. (Figure 1)

Search for the app name ProNFC in the App Store. (Figure 2) Download Methods for Android device.



**Figure 1**



**Figure 2**

For Chinese Android users, scan the ProNFC download QR code. (Figure 3)

For foreign Android users, use the Google Play QR code. (Figure 4)



**Figure 3**

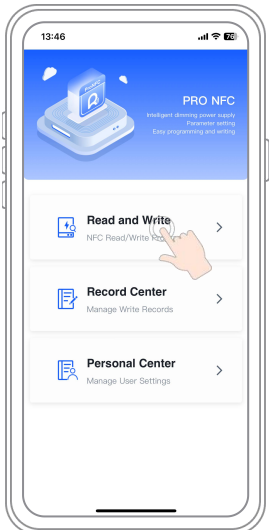


**Figure 4**

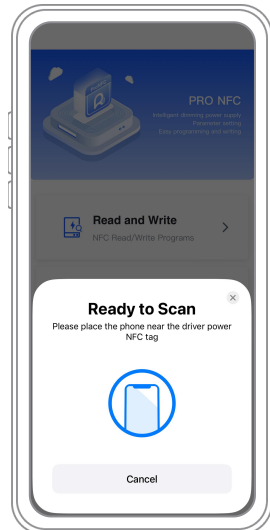
Open the ProNFC APP, Click on the "Read and Write". (Figure 5)

Use the phone's NFC sensing area close to the driver's NFC marking area. (Figure 6)

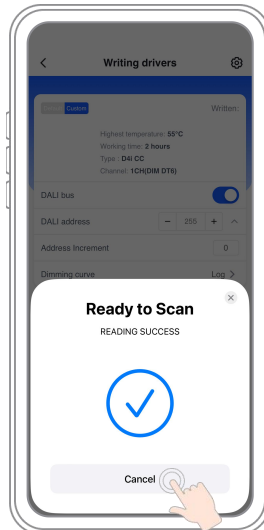
Wait for the successful reading. (Figure 7).



**Figure 5**



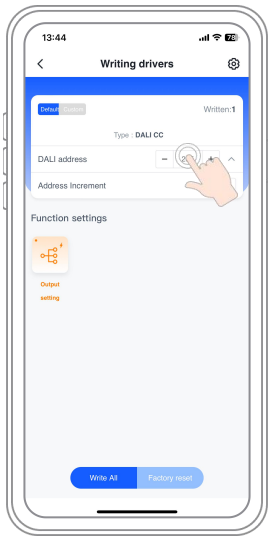
**Figure 6**



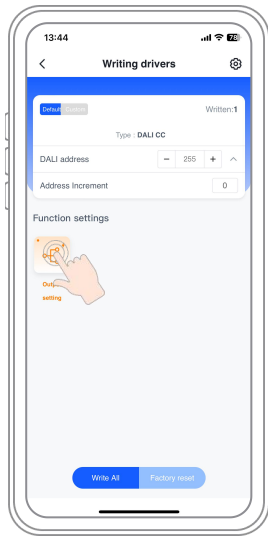
**Figure 7**

**DALI-2 DT8 Dimming Driver - Constant current output - KI-XG-DP2WA Series 100W**

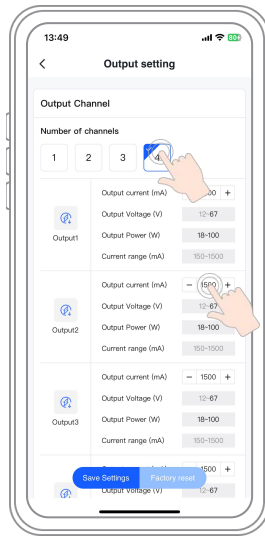
2. The DALI address can be set from 0 to 63(Figure 8).



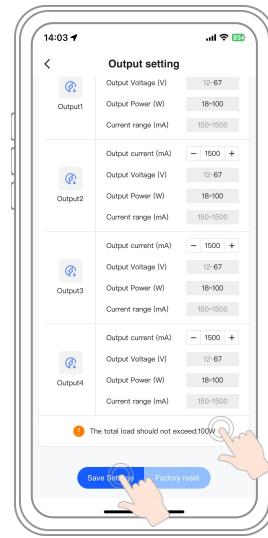
**Figure 8**



**Figure 9**



**Figure 10**



**Figure 11**

3. Click "Output Setting" to set the current and display the corresponding voltage. (Figure 9)

Click to switch the channel selection while the number of multiple output currents below will also change synchronously. (Figure 10)

Click the output current input box to set the output current value with reference to the output voltage range below. (Figure 10)

**Warm tips:**

NFC setting current must not exceed the current range of the LED driver. (150mA-1500mA)

Load voltage cannot exceed the corresponding voltage range. (12-70V)

4. Slide to the bottom to see the total power tips of the output current, according to the total power tips for the current output settings. Save the settings and return to the function homepage. (Figure 11)

**Instructions**

1. This driver should be installed by qualified and professional person.
2. Please make sure the driver is installed with adequate ventilation around it to allow for heat dissipation.
3. Ensure that wiring is correct before test in order to avoid light and power supply damage.
4. If driver Cannot work normally, don't maintain privately.